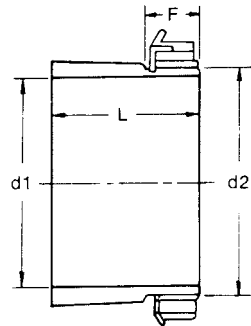


# Adapter for SAF 225-226 Series



## For SAF 22500 Series

Bearing Bore No.	Complete Adapter		Locknut No.	Lockwasher No.	Adapter Sleeve No.	Nominal Sleeve Dimensions Inches				
	Designation	Weight lbs.				Shaft (Bore) Diameter d1	L	F	Thread Pitch Diameter d2	Threads Per Inch
09	SNW 09	0.6	N 09	W 09	S 09	1-7/16	1.584	.662	1.7277	18
10	SNW 10	0.7	N 10	W 10	S 10	1-11/16	1.765	.724	1.9277	18
11	SNW 11	0.8	N 11	W 11	S 11	1-15/16	1.845	.729	2.1174	18
13	SNW 13	1.3	N 13	W 13	S 13	2-3/16	2.100	.792	2.5084	18
15	SNW 15	2.2	AN 15	W 15	S 15	2-7/16	2.296	.895	2.8752	12
16	SNW 16	2.4	AN 16	W 16	S 16	2-11/16	2.376	.895	3.0790	12
17	SNW 17	2.9	AN 17	W 17	S 17	2-15/16	2.486	.926	3.2812	12
18	SNW 18	3.0	AN 18	W 18	S 18	3-3/16	2.646	1.010	3.4682	12
20	SNW 20	4.3	AN 20	W 20	S 20	3-7/16	2.869	1.073	3.8592	12
22	SNW 22	5.0	AN 22	W 22	S 22	3-15/16	3.206	1.135	4.2648	12
24	SNW 24	6.6	AN 24	W 24	S 24	4-3/16	3.466	1.166	4.6558	12
26	SNW 26	9.7	AN 26	W 26	S 26	4-7/16	3.762	1.229	5.0458	12
28	SNW 28	10.3	AN 28	W 28	S 28	4-15/16	3.981	1.291	5.4368	12
30	SNW 30	15.8	AN 30	W 30	S 30	5-3/16	4.241	1.354	5.8273	12
32	SNW 32	15.6	AN 32	W 32	S 32	5-7/16	4.578	1.510	6.1953	8
34	SNW 34	19.4	AN 34	W 34	S 34	5-15/16	4.847	1.541	6.5703	8
36	SNW 36	20.5	AN 36	W 36	S 36	6-7/16	5.038	1.573	6.9773	8
38	SNW 38	23.4	AN 38	W 38	S 38	6-15/16	5.261	1.604	7.3833	8
40	SNW 40	30.7	AN 40	W 40	S 40	7-3/16	5.484	1.666	7.7521	8
44	SNW 44	32.3	N 44	W 44	S 44	7-15/16	5.901	1.698	8.5378	8

## For SAF 22600 Series

Bearing Bore No.	Complete Adapter		Locknut No.	Lockwasher No.	Adapter Sleeve No.	Nominal Sleeve Dimensions Inches				
	Designation	Weight lbs.				Shaft (Bore) Diameter d1	L	F	Thread Pitch Diameter d2	Threads Per Inch
09	SNW 109	0.7	N 09	W 09	S 109	1-7/16	2.133	.662	1.7277	18
10	SNW 110	0.8	N 10	W 10	S 110	1-11/16	2.394	.724	1.9277	18
11	SNW 111	0.9	N 11	W 11	S 111	1-15/16	2.516	.729	2.1174	18
13	SNW 113	1.7	N 13	W 13	S 113	2-3/16	2.771	.792	2.5084	18
15	SNW 115	2.9	AN 15	W 15	S 115	2-7/16	3.084	.895	2.8752	12
16	SNW 116	3.1	AN 16	W 16	S 116	2-11/16	3.204	.895	3.0790	12
17	SNW 117	3.4	AN 17	W 17	S 117	2-15/16	3.312	.926	3.2812	12
18	SNW 118	3.9	AN 18	W 18	S 118	3-3/16	3.553	1.010	3.4682	12
20	SNW 120	6.2	AN 20	W 20	S 120	3-7/16	3.971	1.073	3.8592	12
22	SNW 122	6.4	AN 22	W 22	S 122	3-15/16	4.348	1.135	4.2648	12
24	SNW 124	7.8	AN 24	W 24	S 124	4-3/16	4.648	1.166	4.6558	12
26	SNW 126	12.4	AN 26	W 26	S 126	4-7/16	4.982	1.229	5.0458	12
28	SNW 128	13.0	AN 28	W 28	S 128	4-15/16	5.323	1.291	5.4368	12
30	SNW 130	18.0	AN 30	W 30	S 130	5-3/16	5.621	1.354	5.8278	12
32	SNW 132	18.1	AN 32	W 32	S 132	5-7/16	5.920	1.510	6.1953	8
34	SNW 134	21.0	AN 34	W 34	S 134	5-15/16	6.188	1.541	6.5703	8
36	SNW 136	22.4	AN 36	W 36	S 136	6-7/16	6.456	1.573	6.9773	8
38	SNW 138	28.1	AN 38	W 38	S 138	6-15/16	6.758	1.604	7.3833	8
40	SNW 140	35.7	AN 40	W 40	S 140	7-3/16	7.095	1.666	7.7521	8

• Other shaft sizes are also available.